

Pinon Mesa II Fuel Modification Project



Introduction and Purpose

Tim Tate

Fire Prevention Officer

SB County Hazardous Tree Removal Operations

How This Project Was Identified

John Aziz

Wrightwood Fire Safe Council

Community Wildfire Protection Plan



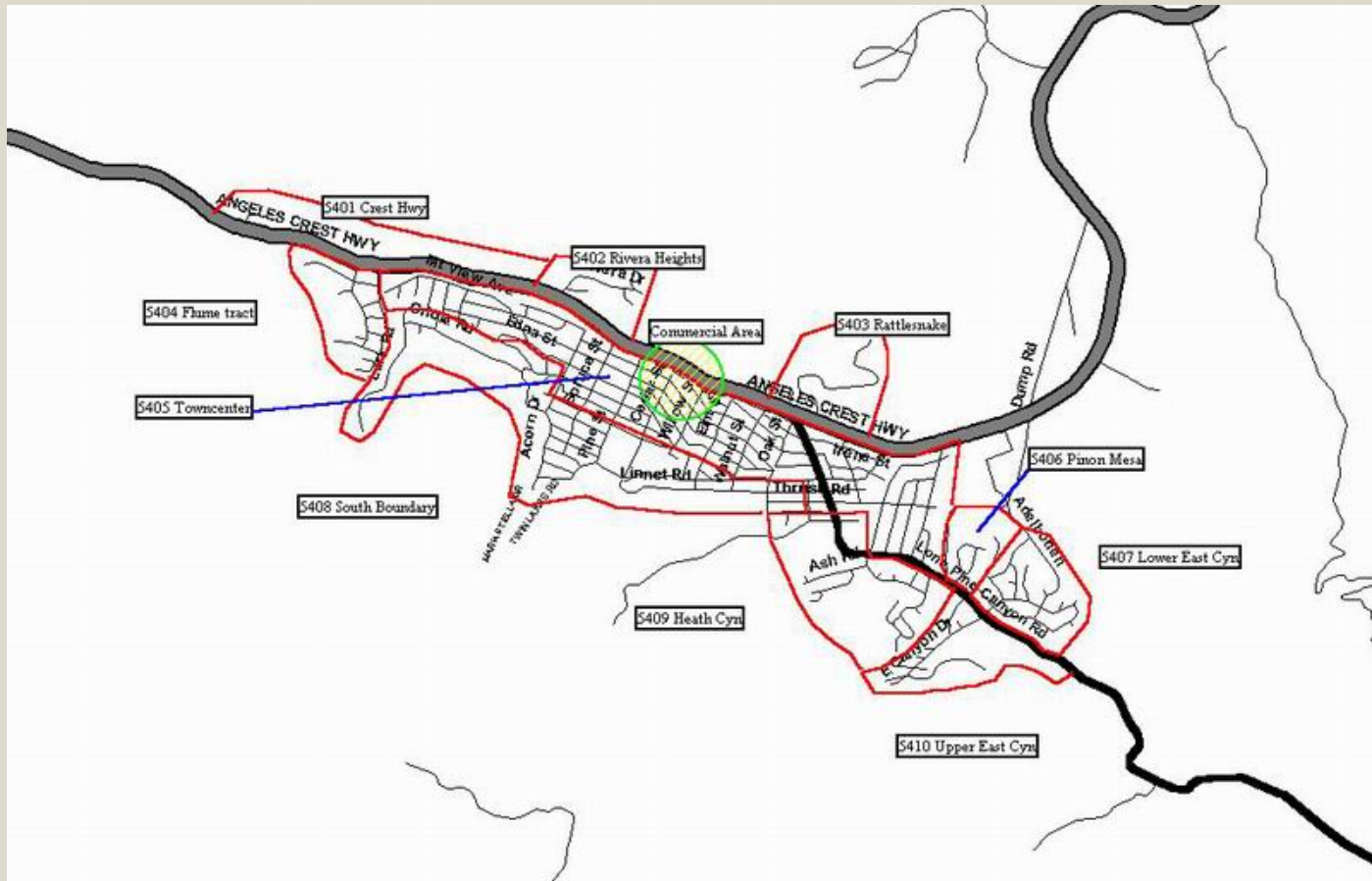
HFRA Dec 3, 2003

Wrightwood Community Wildfire Protection Plan

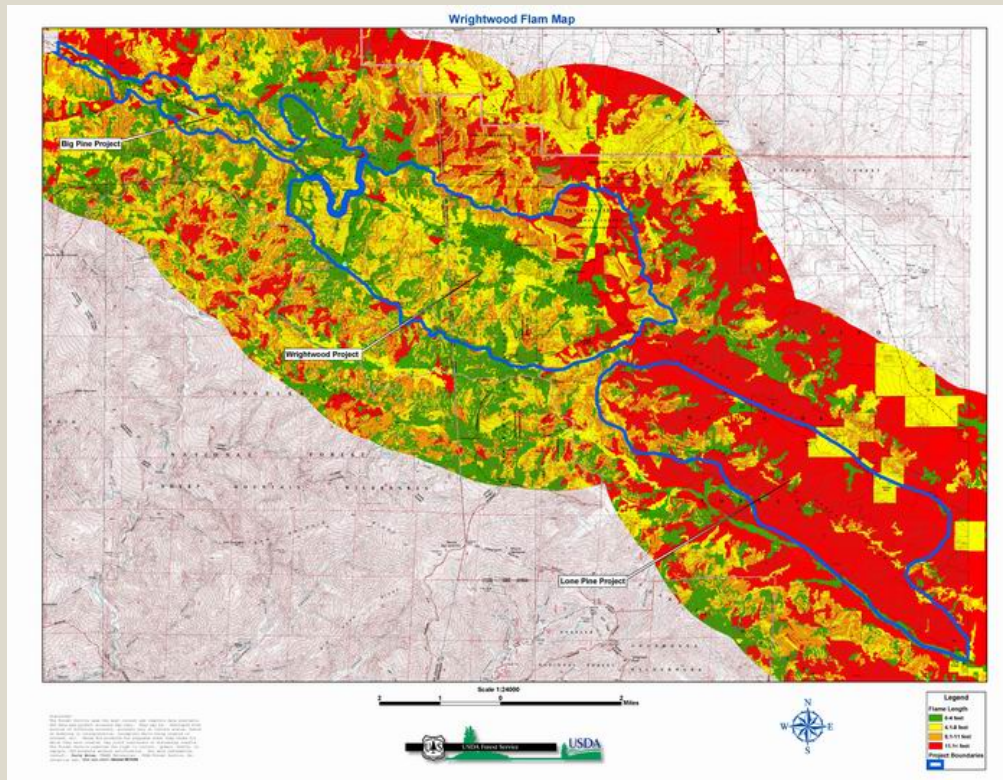


July 2005

Risk Zones Developed







USFS Flame Map

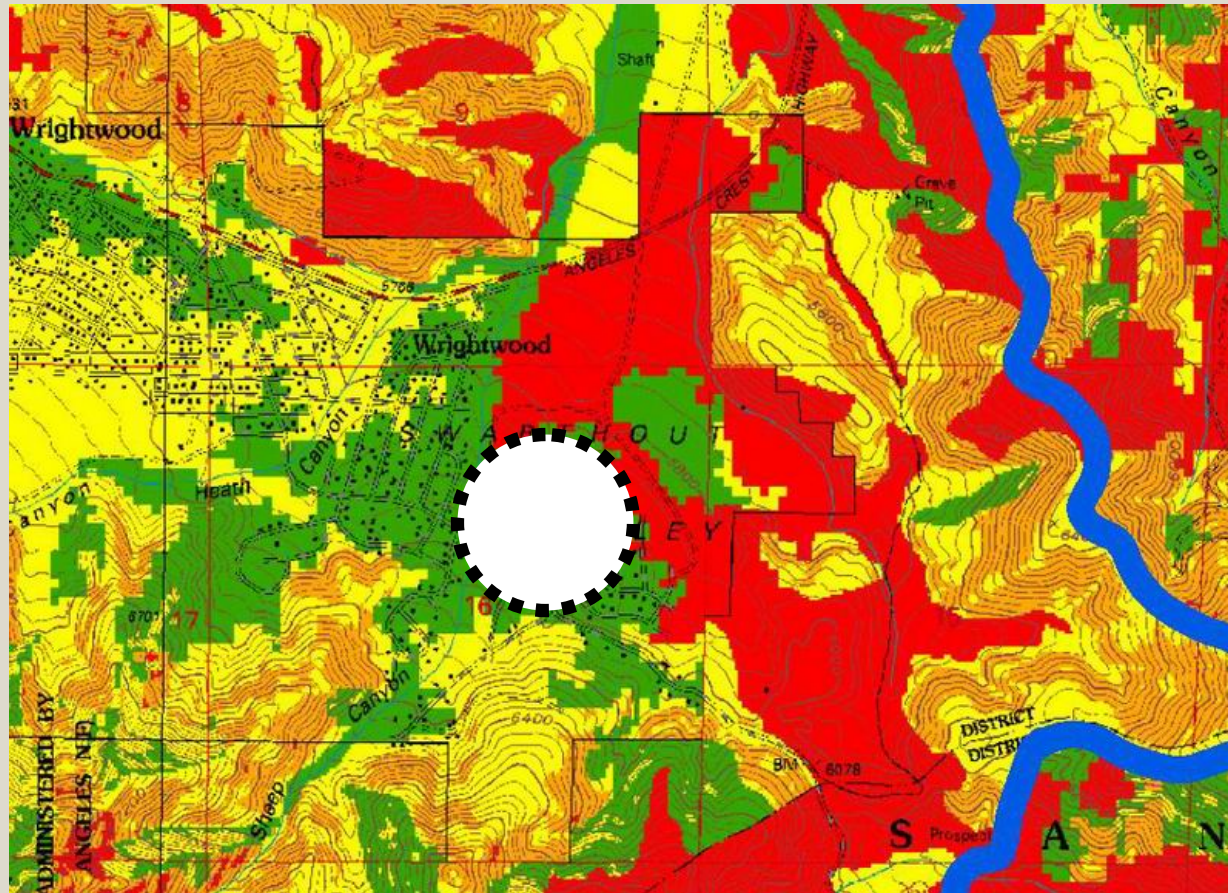


Legend

Flame Length

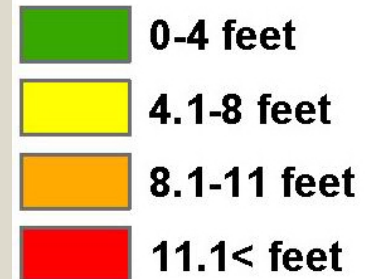
	0-4 feet
	4.1-8 feet
	8.1-11 feet
	11.1< feet

Pinon Mesa Area



Legend

Flame Length



Pinon Mesa - Highest Risk

Zone A. Hazard Rating and Compartment Prioritization										
Area	Fuel		Slope		Factored		Structure		Total	
(highest to lowest rating)	Hazard		Hazard		Hazard		Hazard		Hazard	
	Rating		Rating		Rating		Rating		Rating	
5406 Pinon Mesa	3	x	3	=	9	+	10	=	19	
5410 Upper East Cyn	3	x	2	=	6	+	7	=	13	
5404 Flume Tract	3	x	2	=	6	+	5	=	11	
5405 Town Center	3	x	2	=	6	+	5	=	11	
5408 South Boundary	3	x	2	=	6	+	5	=	11	
5409 Heath Canyon	2	x	2	=	4	+	4	=	8	
5403 Rattlesnake	2	x	1	=	2	+	5	=	7	
5411 Commercial Area	1	x	1	=	1	+	6	=	7	
5401 Crest Hwy	1	x	1	=	1	+	4	=	5	
5402 Rivera Heights	2	x	2	=	4	+	1	=	5	
5407 Lower East Cyn	2	x	1	=	2	+	2	=	4	

Why This Project Is Necessary

Captain Wayne Bennett

SB County Fire Department

Wrightwood Station 101

Pinon Mesa Aug 2004









Point: 34°21'15.00" N 117°37'04.76" W elev: 5194 m

© 2006 Sanborn
Image © 2006 DigitalGlobe
Image © 2006 TerraMetrics

Streaming 44%

© 2005 Google

Eye alt: 7712 m

Oct 2006 Esperanza Fire



Wind and slope alignment caused temperatures to exceed **1220° F** ahead of the fire front



1100° F 1/4" Plate Glass Sags
1218° F Aluminum Melts

Defensible Space



Defensible Space



What Has Been Accomplished And Goals

Tim Tate

Fire Prevention Officer

SB County Hazardous Tree Removal Operations

Pinon Mesa I



Pinon Mesa I



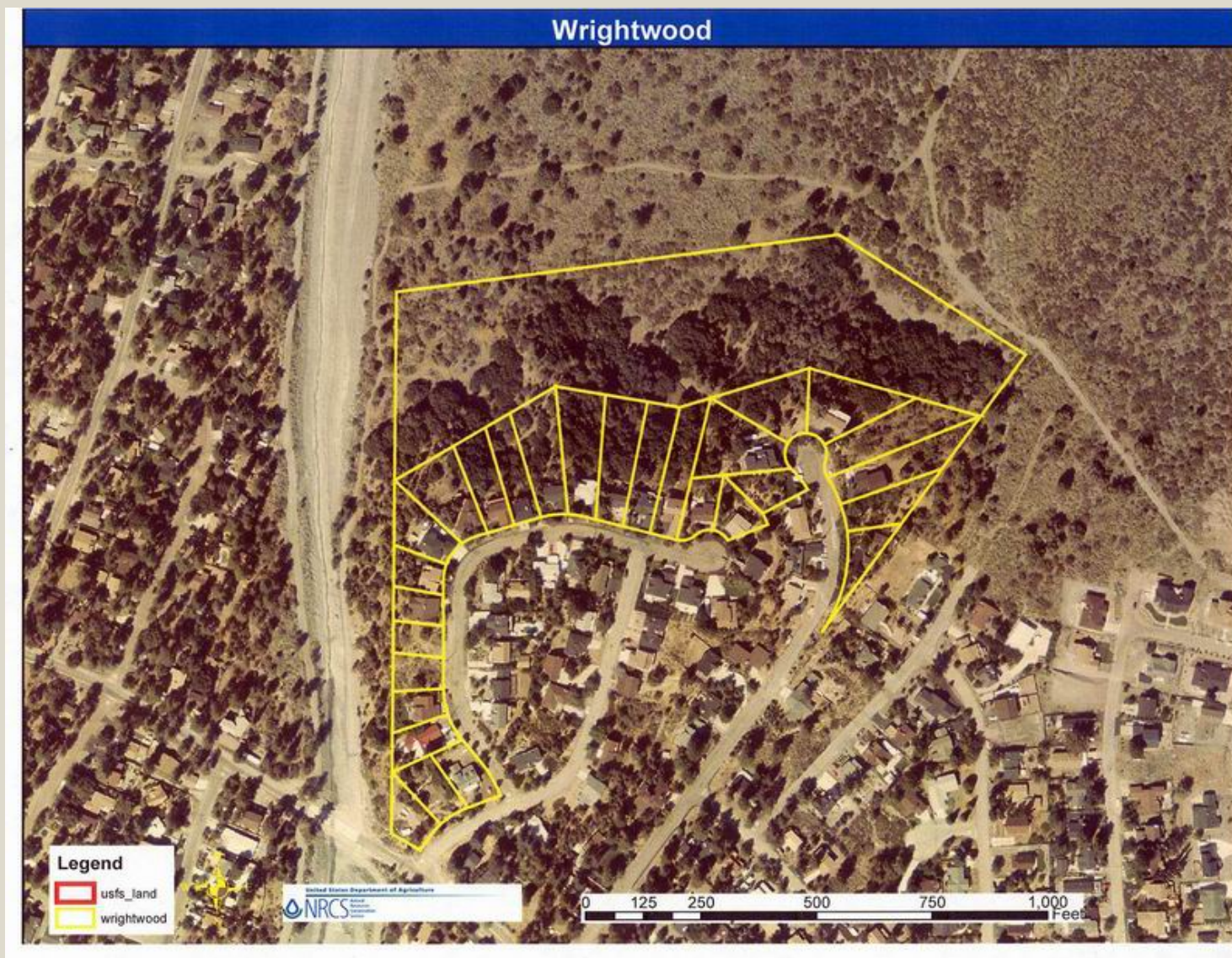
Pinon Mesa I



Pinon Mesa I



Pinon Mesa II Goals



What Will Actually Be Done

Adam Lerner
NRCS

After The Project

Tim Tate

Fire Prevention Officer

SB County Hazardous Tree Removal Operations

Thank You!

